



ATC 25 Advanced Keypad Three Phase Prepayment Meter

Alcansar ATC 25 Prepayment Energy meters with keypad designed and procuded to fully meet prepayment system requirements for Utilities. The meter can be used in credit (post-pay) or prepayment mode that has an option to switch remotely. Together with advanced features such as remote firmware upgared, anti-tamper features, and a wide range of communications options the meters become a unique solution for all type applications in smart grids.

More than 20 years of smart metering experince by merging inhouse Smart Metering software development capabilities we are offering end to end AMI solutions in order to answer following difficulties.

- cash collection,
- asset management
- non technical losses reducing
- managing with bad payers,
- fraudulent existing meters
- remote tasks operation
- data collection, remotely
- load managemement



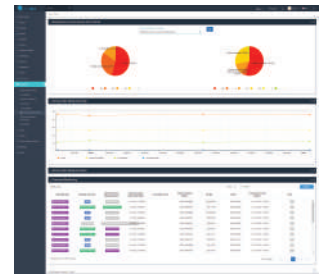
ATC 25 Technical Specifications

Reference Standards :

- IEC 62052-11 General requirements, tests, and test conditions– Part 11
- IEC 62053-21 Particular requirements
 - Part 21: Static meters for active energy (Cl.1 and 2)
- IEC 62055-31 Payments systems– Part 31: Particular requirements
 - Static payment meters for active energy (classes 1 and 2)
- IEC 62056-61 Data exchange for meter reading, tariff and load control
 - Part 61: Object identification system (OBIS)
- BS 5685 BS Conformity ,
- IEC 62055-41/51 STS Prepayment standart

- Accuracy : Cl.1 Active Energy, Cl. 2 Import Export
- Nominal Voltage (Un) : 3x220/380V ... 3x240/415Vac (0.4 Un ...1.9 Un)
- Nominal Current (In) : Ib(lmax) 10(100)A
- Starting Current (Is) : 0.004 Ib
- Nominal Frequency : 50 Hz / 60Hz
- Internal Breaker : 1 pole or 2 poles option
- Mechanical endurance : 10.000 cycle No Load condition
3.000 cycle Max power at PF = 1
- Meter Impulse : 1000 imp/kWh
- Communications :
 - Meter to CIU : RF, PLC, or RS 485
 - Meter to HES (Center) : 3G, GPRS, PLC, BPL,
 - Protocols : DLMS(COSEM), IEC 62046-21
- Dimensions : 176 x 222 x 88mm
- Weight : 1.5 kg
- Mechanical Features : IP 54, double insulation
- Limit Temperature : -40°C +75°C (3K7)
- Humidity : 95%

HeadEnd, Billing, Prepayment Systems



4G, 3G, GPRS, PLC, BPL

Metering Place

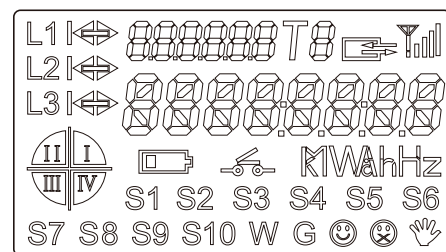


PLC, RF, RS485

Customer Information



Display Features



ATC 25 Energy Meter Dimensions

